



The Global Leader in Infrared Cameras

# ThermoVision® SCOUT™ ZX INFRARED CAMERA



The ThermoVision Scout ZX features a thermal imager with 4X resolution, and a one-touch 4X digital power zoom – to quickly and accurately locate perpetrators and missing persons. Easy, one-handed operation and clear, high-quality images provide enhanced officer safety and security.

- > New High Resolution 4x Viewing
- > One Touch, Built-in Digital Zoom
- > Ultra-compact, Light, and Durable
- > Affordable & Easy-to-use
- > Crisp, High-quality Images
- > Easy-view Integral LCD
- > Instantly Ready for Use
- > Attaches to Belt

## Find Perpetrators and Missing Persons Fast with High Resolution Viewing

The new SCOUT™ ZX features 4 times the resolution – for faster and more accurate target identification than ever before, day or night. View crisp thermal images on the 2.5" color LCD screen, highlight and analyze targets, store images and share findings with colleagues.

## One-touch Digital Zoom

The Scout ZX boasts a built-in, one-touch digital zoom, to magnify targets without any loss of image clarity – to quickly and easily spot perpetrators and missing persons – while enhancing officer safety.

## Rugged, Lightweight and Weather-resistant

Hold in your hand, clip to your belt, or place in your vest or vehicle, the SCOUT ZX weighs under 2 lbs and is as easy to handle as a flashlight! It is the lightest IR imaging and storage camera in the world making it ideal for law enforcement applications. Dust and splash proof, the weather-resistant SCOUT ZX infrared camera meets IP 54 standards and withstands harsh environments.

## Pinpoint Problems with Precision

The New SCOUT ZX features a one-touch built-in digital zoom, ensuring better target identification and a higher level of officer safety. Simply point and scan for instant infrared images that show warmer, hotter areas, potentially indicative of criminals, perpetrators or victims.

## Smart Power Management

Lightweight, long life Li-Ion battery assures uninterrupted operations. The SCOUT ZX includes an internal battery charger and car/truck charger adapter for improved reliability.

## View Sensitive Thermal Images

A maintenance-free, state-of-the-art uncooled FPA infrared detector produces highly sensitive thermal images that allow you to detect subtle temperature variations that can signal areas where criminals or other threats to public safety are hidden.

## Improve Officer Safety and Security

Vivid, easy-view color LCD features adjustable brightness and eliminates unsafe squinting into an eyepiece, facilitating fast and accurate searches, regardless of lighting conditions. Detect hidden perpetrators safely. Don't just find the bad guys, stay one step ahead and keep your distance with the SCOUT ZX™ IR camera!

## Download and Document

Standard storage feature lets you save and recall up to 100 JPEG thermal images in the camera's on-board memory. Download stored images quickly to your PC with ThermoCAM QuickView™ software. Document your findings for evidence collection simply by inserting JPEG's into your favorite word processing programs. You can even email high quality thermal images at the push of a button.

## Find Suspects and Victims Fast with InstAlert™

The Scout's exclusive InstAlert object tagging feature highlights warm objects, such as people or vehicles, in red for immediate operator attention. (The background of the image remains in black and white for detailed scene analysis.) Utilizing the InstAlert's powerful auto-contrast algorithm instantly optimizes image contrast for maximum target definition and tracking capability.

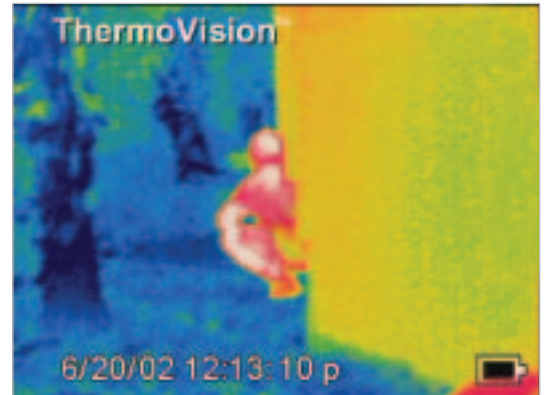
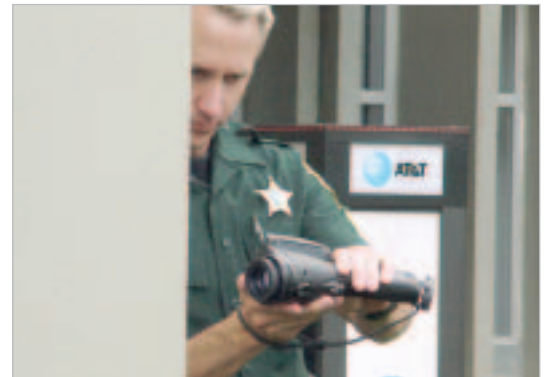


One-touch digital zoom.

# ThermoVision® SCOUT ZX Technical Specifications

Imaging Performance	
Field of view	25° X 19° / 0.3m
Thermal sensitivity (N.E.T.D)	0.08° C at 25° C
Focus	Manual
Detector type	Focal plane array (FPA) uncooled microbolometer 320 x 240 pixels
Digital Zoom	1 x, 2 x or 4 x
Spectral range	7.5 to 13 µm
Viewing temperature range	-20° C to +250° C
Alarm functionality	InstAlert (color alarm)
Image Presentation	
Display	2.5" color LCD, 16K colors
Video output	PAL or NTSC, standard RCA composite video
Image controls	Palettes (Iron, Rainbow, B/W, B/W inv, InstAlert™), Auto adjust (continuous/manual)
Set-up controls	Date/time, Temperature units °C/°F, Language, scale, info field, LCD intensity (high/normal/low)
Image Storage	
Type	Built-in FLASH memory (>100 images)
File formats	Standard JPEG
Lenses (optional)	
2x Telescope	15° x 11° (0.5m)
0.5 Wide angle	45° x 36° / 0.2m
Battery System	
Type	Li-Ion, rechargeable, field replaceable
Operating time	2 hours continuous operation. Display shows battery status
Charging system	In camera, AC adapter or 12 V from car (with optional Std. cable) 2 bay intelligent charger, 12 V
AC operation	AC adapter 90-260 V AC, 50/60 Hz, 12 V DC out
Voltage	11-16 V DC
Power saving	Automatic shutdown and sleep mode (user selectable)
Environmental Specification	
Operating temperature range	-15° C to +45° C
Storage temperature range	-40° C to +70° C
Humidity	Operating and storage 20% to 80%, non-condensing, IEC 359
Encapsulation	IP54
Shock	Operational: 25G, IEC 68-2-29
Vibration	Operational: 2G, IEC 68-2-6
Physical Characteristics	
Weight	< 800 g, incl. battery (with 25° lens)
Size	272 mm x 80 mm x 105 mm
Tripod Mounting	1/4" - 20
Cover case	Plastic and rubber
Interfaces	
USB	Image transfer to PC
RS-232 cable (optional)	Image transfer to PC
Video output	Standard RCA composite video

ThermoVision SCOUT ZX System Includes:	
IR camera	
Ruggedized transport case	
Power supply	
Hand strap	
Lens cap	
User manual	
Power cord	
Battery	
Battery charger	
ThermaCAM® QuickView™ Software	
USB cable	
Sunshield	
12V DC charger car adapter	



Distributed by:  
DTC Communications, Inc.  
Call: 1 800 233 8639 or 603 880 4411  
Email: info@dtccom.com



1 800 464 6372  
CANADA: 1 800 613 0507  
[www.flirthermography.com/scoutzxdata](http://www.flirthermography.com/scoutzxdata)